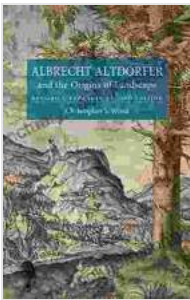


Albrecht Altdorfer and the Origins of Landscape

Albrecht Altdorfer (c. 1480–1538) was a German painter and printmaker who is considered one of the founders of landscape painting. His work is characterized by its detailed naturalism and its often fantastical and dreamlike qualities.



Albrecht Altdorfer and the Origins of Landscape:

Revised and Expanded Second Edition by Christopher S. Wood

★★★★☆ 4.8 out of 5

Language : English
File size : 14607 KB
Text-to-Speech : Enabled
Screen Reader : Supported
Enhanced typesetting : Enabled
Print length : 384 pages



Altdorfer was born in Regensburg, Germany, and studied with his father, Ulrich Altdorfer, who was also a painter. In 1505, Altdorfer joined the Danube School, a group of artists who were influenced by the work of Albrecht Dürer. The Danube School artists were known for their detailed and realistic depictions of nature, and for their use of fantastical and dreamlike imagery.

Altdorfer's work is often divided into two periods: his early period, in which he produced mostly religious paintings, and his later period, in which he produced mostly landscapes. His early religious paintings are characterized

by their detailed naturalism and their use of bright colors. His later landscapes are characterized by their more fantastical and dreamlike qualities, and by their use of more subdued colors.

One of Altdorfer's most famous paintings is *The Battle of Issus* (1529), which depicts the battle between Alexander the Great and King Darius III of Persia. The painting is known for its detailed depiction of the battle, and for its use of fantastical and dreamlike imagery. The painting is now in the collection of the Metropolitan Museum of Art in New York City.

Altdorfer was a major influence on the development of landscape painting. His work helped to establish landscape painting as a legitimate genre of art, and his influence can be seen in the work of later landscape painters, such as Joachim Patinir, Pieter Bruegel the Elder, and Hans Holbein the Younger.

Altdorfer's Landscapes

Altdorfer's landscapes are characterized by their detailed naturalism and their often fantastical and dreamlike qualities.

In his early landscapes, Altdorfer often depicted scenes of the Danube River and the Bavarian Alps. These landscapes are characterized by their detailed depiction of nature, and by their use of bright colors.

In his later landscapes, Altdorfer began to experiment with more fantastical and dreamlike imagery. These landscapes often depict scenes of forests and mountains, and they are often populated by mythical creatures and figures.

Altdorfer's landscapes are often seen as a reflection of his own inner world. His landscapes are often filled with symbols and allegories, and they often reflect his own personal experiences and emotions.

Legacy

Altdorfer was a major influence on the development of landscape painting. His work helped to establish landscape painting as a legitimate genre of art, and his influence can be seen in the work of later landscape painters, such as Joachim Patinir, Pieter Bruegel the Elder, and Hans Holbein the Younger.

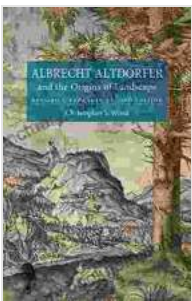
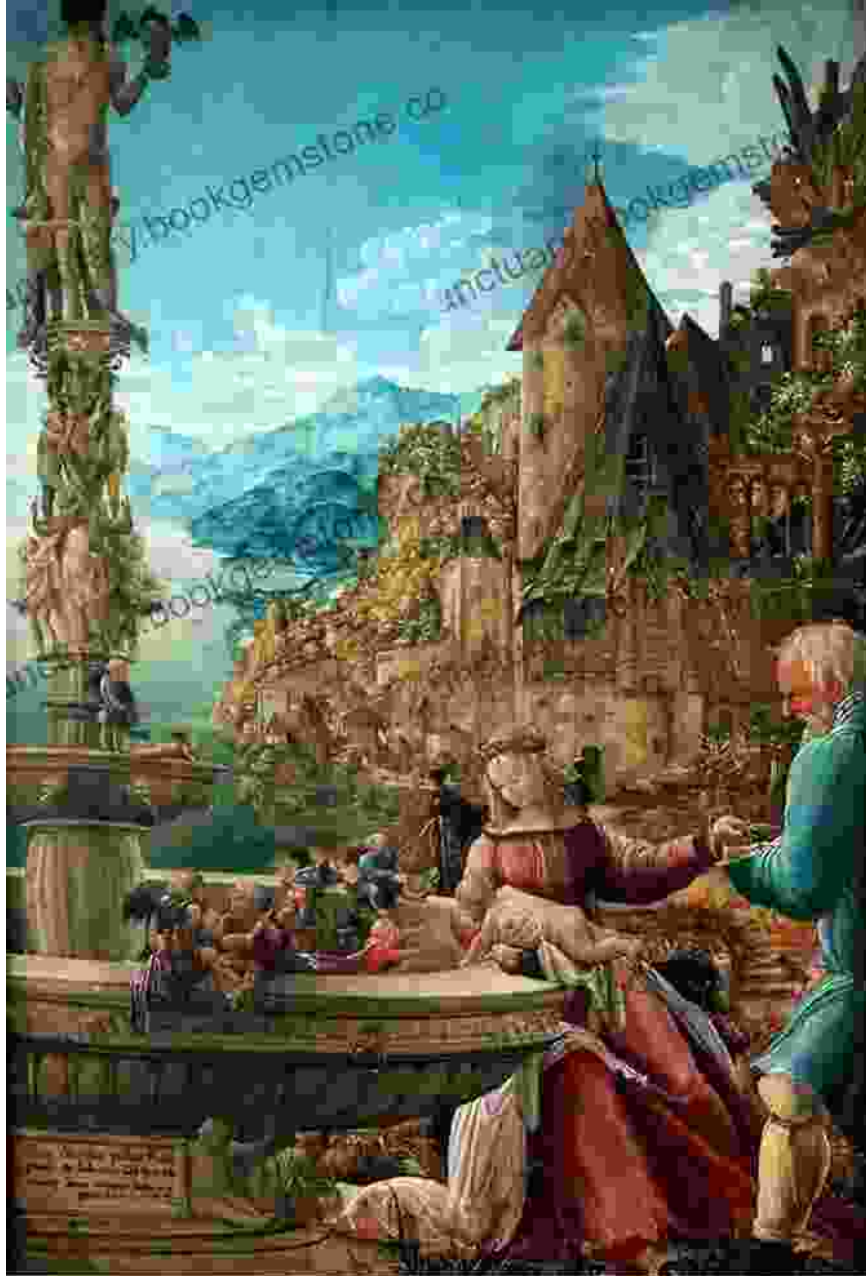
Altdorfer's work is now in the collections of many major museums around the world, including the Metropolitan Museum of Art in New York City, the Louvre in Paris, and the Uffizi Gallery in Florence.

Albrecht Altdorfer was a pioneer of landscape painting and is considered to be one of the most important artists of the German Renaissance.

Altdorfer's work is characterized by its detailed naturalism, its fantastical and dreamlike qualities, and its personal symbolism.

Altdorfer's work was a major influence on the development of landscape painting, and his legacy continues to inspire artists today.





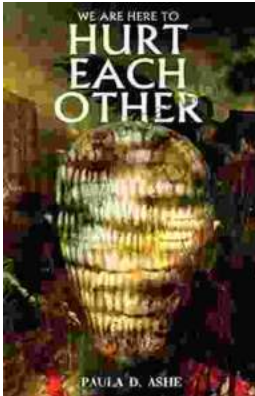
Albrecht Altdorfer and the Origins of Landscape: Revised and Expanded Second Edition by Christopher S. Wood

★★★★☆ 4.8 out of 5

Language : English
File size : 14607 KB
Text-to-Speech : Enabled
Screen Reader : Supported
Enhanced typesetting : Enabled
Print length : 384 pages

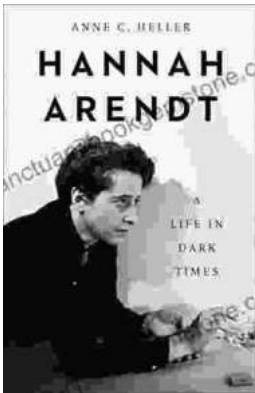
FREE

DOWNLOAD E-BOOK



We Are Here To Hurt Each Other: A Deep Dive into the Brutality of Human Nature

Yes, I can help you with that. Here is an SEO-friendly HTML article including alt text. **** The human condition is a complex and often paradoxical one. We are capable of...



Hannah Arendt: A Life in Dark Times

Hannah Arendt was a German-American political theorist, philosopher, and historian. She is best known for her work on totalitarianism, the nature of evil,...